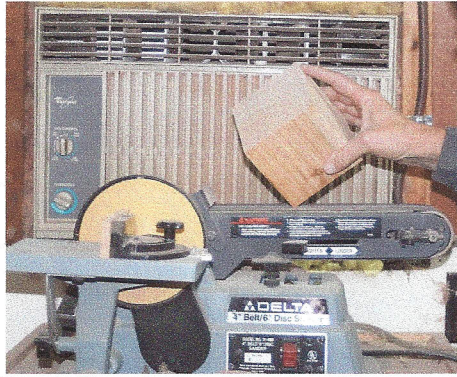
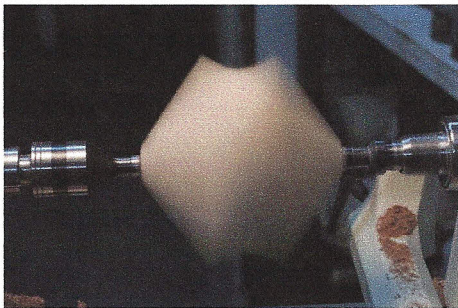


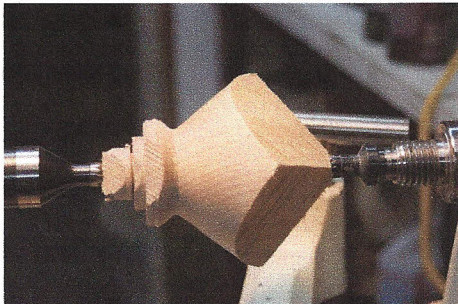
INSTRUCTIONS FOR 3 WINGED VESSEL



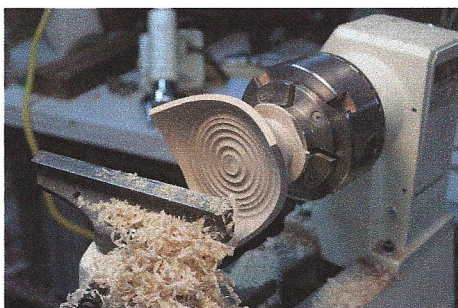
Step 1: Sand diagonal corners on the square block.



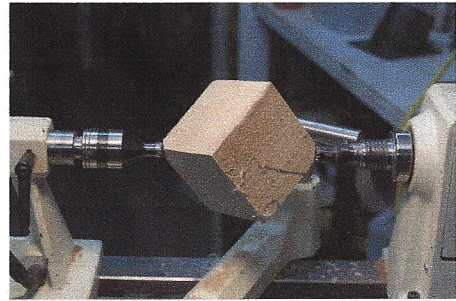
Step 3: Turn away the edges on the tail stock end



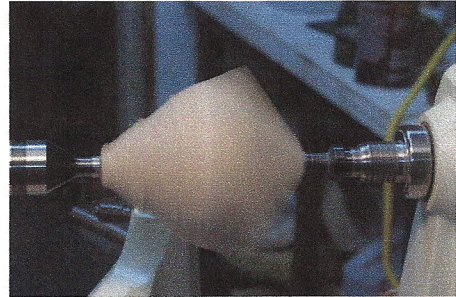
Step 5: When round near live center turn a spigot for mounting in a chuck.



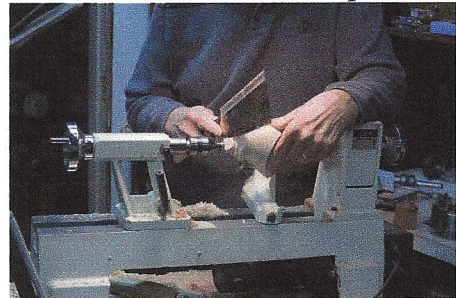
Step 7: Finish the outside and than turn away the inner part.



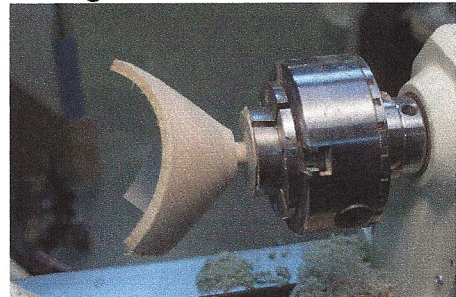
Step 2: Mount the block on lathe using sanded corners as mounting points



Step 4: Rough turn to a tapered shape and note the curve that formed the top edge. It should be a nice even complete curve,



Step 6: Use a saw to remove knob from end of turning to allow it to fit in the chuck



Step: 8 Turn ½ Inch spigot at the chuck now the finished vessel ready to be cut from the chuck



The finished three winged vessel