

Woodturners of North Texas



Next Meeting: Thursday, March 31st, 2016
Meeting Start: 6:30 PM

Handley-Meadowbrook Lions Club 6013 Craig Street Fort Worth, TX

Inside This Issue

This Month's Program	1	Club Challenge Program	7	Clamshell Box	18
Making Good Shavings	3	Stuart Batty Classes	9	Empty Bowls	23
Calendar	5	Last Month's Challenge	12	Mentors	25
		Last Month's Critique	15		

Turning the Clamshell Box By Wayne Furr



Wayne was introduced to woodturning over fifty years ago in High School, but didn't turn again until 1994. He honed his skills by taking classes from several internationally known turners and by attending symposiums, workshops, and many turning demonstrations. He has been the instructor's assistant at the Arrowmont School of Arts and Crafts in Gatlinburg, TN and at the John C. Campbell Folk School in Brass-town, NC on numerous occasions.

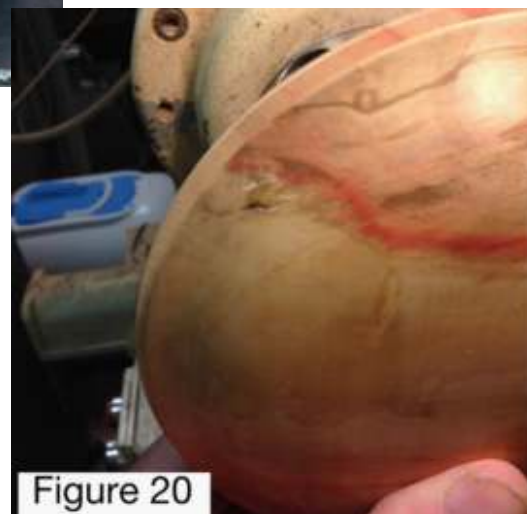
Wayne is a member of the American Association of Woodturners and an Honorary-Life member of the Central Oklahoma Woodturners.

He has served on their Executive Board for twelve years as President, Vice President, and Member at Large. Before retirement, he was Manager of Cartography for the Oklahoma Geological Survey. He holds a Bachelor's degree with Highest Honors in geography and additional graduate work from the University of Oklahoma and an Associates degree in Drafting plus most of the course work in Surveying from Community College of Denver, Red Rocks Campus, Golden Colorado.

Wayne Furr, President

Central Oklahoma Woodturners Association

wayne_furr@okwoodturners.net





... making Good Shavings

President's report for March 2016

- Welcome to our new members: David Borchert, Paul Butcher, Brad Colbeert, Tony Lemon, John Reagan and Robert Starkey. Also re-welcome returning member Henry Maserang.
- We had another great meeting in February with a near record attendance. I certainly enjoyed seeing Paul Coppinger again as there is often some excitement associated when scabs are turned, and this was no exception.
- For those who caught it, and most did, during the opening I welcomed everyone to the “Golden Triangle Woodturners”. I can only attribute that to loss of blood. During the open shop I tried to catch a chuck that spun off of our club lathe. Needless to say I caught the jaws, or they caught me. Five stitches and three weeks later I am pretty well healed except for the disgrace of having to be this month’s Safety Coordinator.
- Internationally renowned turner Stuart Batty’s workshops will start on April 10th and go thru the 15th for those who have registered. All is not lost if you did not get a place as he will be holding an all day series of demonstrations on Saturday April 16th at the Lions Club. Demonstrations will start at 9:00am and go to about 4:00pm. If you are a member you get in free and non-members are \$10.

- I hope everyone is participating in this month's Bob's Challenge to make a yarn bowl. Several very unusual off axis turnings were produced last month but I think the yarn bowl may be a bit more challenging if you are making a spiral cutout for the yarn. I sure had trouble with it. I am looking forward to the April challenge, but Bob will not even tell the board what his surprise is going to be. Remember, you get one quarterly drawing ticket for each month you participate in the challenge.
- Ray Moyer is coordinating our Beads of Courage program. See Ray for your label bead(s) and any other information on the program.
- Our 2016 Empty Bowls season has started. Let's see if we can beat our 2015 production.
- See you at 6:30pm Thursday and be safe. We don't need another "safety coordinator".

Glynn Cox
President



Calendar of Events

March 31st - Regular Monthly meeting 6:30 PM, Lions Club,
Demonstrator: Wayne Furr - “Turning the Clamshell Box”

April 5 - Board of Director’s Meeting (Note special date)

April 10-16 - Stuart Batty classes and demo

April 28th - Regular Monthly meeting 6:30 PM, Lions Club,
Demonstrator: TBA

May 26th - Regular Monthly meeting 6:30 PM, Lions Club,
Demonstrator: TBA

WNT 2016 MEMBERSHIP RENEWAL

Annual membership renewal is due January 1 each year.

If you have not already renewed please do so at the January meeting.

Preprinted forms with your 2015 info will be provided for your review.

You may pay \$24 with check or cash. Correct change will be appreciated.

James Haynes, Treasurer

Who's up for a Challenge?

There was some amazing work on the challenge table last month. I always learn something new and I hope you guys pick up a trick or two also. As usual, I would encourage everyone that can, to participate. I think you will find that tackling a challenge and comparing your experience with others is very rewarding.

Our challenge for January was to turn an off axis turning. Twenty-seven (27) members participated producing 28+ items. We received all different kinds of Off-axis turnings including 2 Axis to 8 axis items. Below is a list of members who turned candle holders for the February Challenge:

David Baulch	Larry Denning	Jim McGregor	Pam Thompson
Tom Beatty	Mike Haynes	Ray Moyer	Paul Tiefel
David Carter	Bill Holt	Jeff Robbins	David Walker
Kelton Cloud	Rick Gauthier	Tommy Schutz	Bob Wiggins
David Colley	Ron Howe	John Solberg	Scott Wisdom
Glynn Cox	Dick Koch	Larry Sweeney	Don York
Fred Denke	John Lauderbaugh	Steve Thomason	

We also held the quarterly drawing with 39 members having tickets. We had 10 items to distribute that were either bought by the club or donated by Rockler, Woodcraft, Wood World, or members. Members participating in this drawing are shown on the next page.

Jim Barkelew	Fred Denke	Dick Koch	Larry Sweeney
Matt Bashore	Larry Denning	John Lauderbaugh	Steve Thomason
David Baulch	Thomas Echols	Jim McGregor	Pam Thompson
Tom Beatty	Rick Gauthier	Ray Moyer	Paul Tiefel
David Carter	Jimmie Gill	Ronnie Nuzum	David Walker
Don Christiansen	James Haynes	Jeff Robbins	Bob Wiggins
Bob Clark	Mike Haynes	Tommy Schutz	Dave Wilson
Kelton Cloud	Bill Holt	Larry Roberts	Scott Wisdom
David Colley	Ron Howe	John Solberg	Don York
Glynn Cox	Sandy Jarrell	Larry Stephens	

The challenge for this month is to turn a yarn bowl. There are a lot of images on u-tube showing different styles of yarn bowls. The weather is nice and there is still plenty of time to get one turned before the meeting.

Hope to see you at the meeting Thursday.



Bob Wiggins

Stuart Batty Classes



Stuart Batty, formerly from England, will be our Spring 2016 featured demonstrator/hands-on instructor. Stuart is considered one of the best demonstrator/instructors on our planet. If you have been to SWAT or the AAW Symposium you have most likely seen the crowds he draws whether or not he has a place in the regular rotation of

demonstrators.

Consider watching his 34 free videos at <https://vimeo.com/woodturning> . Although watching his videos is a tremendous learning tool, taking a class from Stuart will absolutely blow you away with the techniques and practices that you will learn. It can be a major turning point for you as a woodturner. It was for me.

For further information about Stuart, go to Google and search for Stuart Batty. You will be amazed at the amount and quality of the data you find.

A person may only sign up for one class. Classes are limited to six students per class and are currently full. If someone wants more than one class, their name will be placed on the Alternate List for the other class they would desire. If the second class they desire to attend is not filled by the March club meeting time, the alternates will have first choice of any classes that are not filled.

The class fees are \$150 per day. The Saturday All-Day Demonstration is FREE to club members and only \$10 to non-club members. The All-Day Demo will be held at the regular club

meeting place. Hands-On classes will be held at a location to be announced at a later date.

Schedule of Events

Sunday and Monday, April 10 & 11 - 2 Day Class Intermediate/Advanced

This will be a combined class of both bowl and spindle turning technique and will include some negative rake scraping tips and techniques.

Tuesday, April 12 --- 1 Day Beginner Fundamentals Class

In this class we will cover the spindle roughing gouge and then move on to learning the 40/40 bowl gouge and spindle gouge.

The students will learn to free hand grind the three various gouges and use them in a variety of both spindle and bowl turning cuts.

Wednesday, April 13--- 1 Day Turning Spindle Techniques -

Use of only spindle tools including Roughing gouge, spindle gouge, parting tools and skew chisel.

Thursday, April 14--- 1 Day Bowl Turning with the 40/40 Bowl Gouge and Bottom Bowl Gouge

Friday, April 15--- 1 Day Bowl Turning with the 40/40 Bowl Gouge and Bottom Bowl Gouge

(continued next page)

Saturday, April 16---All-Day Demo FREE to Club Members only.
All others \$10 at the door.



Last Month's Challenge







Last Month's Critique





**SWAT 2016 AKA SWAT-25
is SWAT's 25th Anniversary**

Waco Convention Center:

Fri. August 26th thru Sun. August 28th, 2016

Early registration, which begins March 1st, will remain at \$140 but on-site registration will increase to \$175. It is beneficial to everybody to register early

This year, there will be 8 lead turners and 11 regional turners.

The Leads include:

*Stuart Batty - Demo-1 Perfecting the Art of Cutting Learn the art of cutting without torn grain. Demo 2-Bowl Turning with the 40/40 Grind.
Demo 3-Seven Set-up Fundamentals Every cut requires*

John Beaver - The artistic elements I feature are motion, rhythm, depth and contrast. A large portion of my work has elements that bridge the interior and exterior, sometimes creating the illusion of a vessel within a vessel.

Cindy Drozda - Her trademarks are precise techniques, fine details, and pleasing forms. Cindy will coach you to new levels of excellence in your woodturning!

Clay Foster - Demo 1-Low Tech Surface Enhancement Techniques, Demo 2-Grids and spirals:

John Jordan - Known primarily for his textured and carved hollow vessels, John has been featured in nearly every major turning exhibition the past twenty years.

Mary Lacer - Demo 1-Topology, Demo 2 - Off-Center Turning

Mike Mahoney - I have been a professional bowlmaker since graduating from San Diego State in 1998. My main production items are salad bowls followed by burial urns, hollow forms, treenware, and any job that walks through the door.

Dick Sing - I have always been in tune to precision and detail. I am, however, firmly convinced that it is very difficult to create something outstanding from something simple. No matter how much ornamentation may be added to an object, pure form is what makes the piece a work of art and collectable. Good form is ageless; it will look as good in years to come as it does today.

The selection committee is currently evaluating the proposals for regional turners.

As previously announced, there will be an ATM available at the symposium. There will be an article in the June issue of AAW American Woodturner about SWAT's 25th anniversary.

Bob Clark
WNT SWAT Director

Turning the Clamshell Box

Demonstration by Wayne Furr, SWAT 2016



The clamshell box is a stylized design based on a natural clamshell. The idea and design of this clamshell box comes from my good friend Mark Baker's book, *Woodturning projects: a workshop guide to shapes*; Guild of Master Craftsman Publications, LTD, 2003, reprinted 2004 & 2005, pages 52 & 53. The shape of the box is pleasing in form, a joy to hold and fun to play with.

Most turners learn to turn a bowl early on. But the challenge; can you turn two nearly identical bowls with only a slight difference? The difference being that one side has a bead to hold the two halves together and the other does not. Another issue is that the grain runs horizontal, which is not what we normally see in boxes. During the demonstration tool use will be covered along with safety issues stressed. This demonstration is geared for advanced beginners to intermediate wood turners.

Selecting and preparing the blank for turning



Figure 1

Select a suitable block of wood that has a nice grain to simulate the natural clamshell. The initial blank should be about 6" square and 2 1/2"-2 5/8" thick. Once you have a suitable blank the next step is to mark and divide it into two nearly equally thick pieces. One side should be about 1/8" more in thickness than the other. This will account for the bead to hold the two pieces in place when finished (See Figure 1).

Once the square has been divided into two pieces it is time to mark the center and draw the circle. You can do this by using double sided tape and sticking the two halves together with the band sawn sides facing up, place the thicker half on top. After the center has been marked draw a circle that extends to the edges of the turning square (Refer to Figure 2). Leaving the two pieces stuck together it is time to band saw them into circles (Figure 3). When they are stuck together they can be band sawed as one.



Figure 2



Figure 3

Because we will be using a screw drive to mount the blanks to true up, turn the bottom, and tenon, it is time to drill for the screw drive. I am using the screw drive and talon chuck. The directions call for a hole of 11/32" and 3/4" deep. I have found that the 11/32" is a little too tight making the blank too difficult to screw on and off. I find that a bit size of 25/64" works better for this project. Because our blanks are only 1 1/4" thick a depth of 3/4" is too deep, so drill only 9/16" (Figure 4). Use spacers to take up the space between the face of the chuck jaws and the blank (Figure 5).



Figure 4



Figure 5

What is a safe lathe speed?

Before getting into the actual turning, now is a good time to talk a little about lathe-speed safety. I have rarely been to a demonstration when the following question was not asked: "What speed are you turning?" The demonstrator will look down at the speed dial and give what the indicator says. This is a very important safety question and one that we should all take to heart. Every once in a while we hear of someone that was injured or even killed when a piece came apart and hit them in the face. Most if not all lathe manufactures provide a chart of safe lathe speed in their manuals. But the big questions, how many of you actually looked at the one that came with your lathe or put a copy up next to the lathe as a reference? The truth is, we don't! About 45-years ago Dale Nish came up with a simple formula that is easy to remember and provides safe speeds when starting a new piece. The formula is $D \times RPM = (a \text{ number between } 6000 \text{ \& } 9000)$ where D = the diameter of the blank, RPM is the unknown that we are searching for, and the number between 6000 & 9000 is just a number. Since the unknown is the RPM , we simply divide the number 6000 to find a safe low turning RPM then divide 9000 to find the fastest safe RPM to turn. A complete description of this can be found at <http://blog.woodturnerscatalog.com/2012/08/safe-wood-lathe-speeds/>

Next, true up the edge of the two pieces as one (Figure 6).

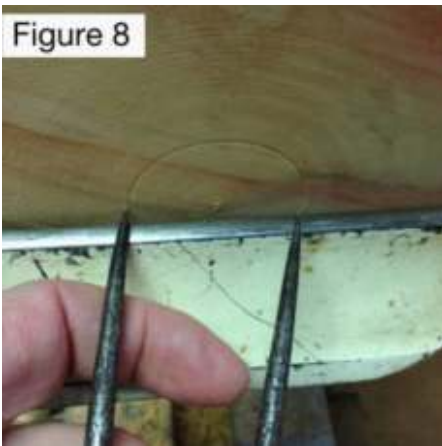


Figure 6

After you have trued up the edges of the two halves as one, it is time to true up the bottom face (Figure 7).



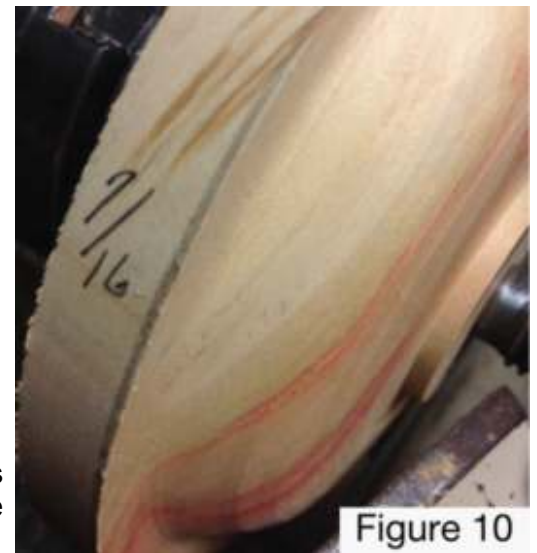
Figure 7



After the bottom is trued up and smooth, it is time to measure and turn the tenon for the chuck. I have set the dividers to $1\frac{3}{4}$ " which is the minimum diameter for them to close down on the tenon. By eye, I estimate the center of the revolving piece and place the divider's right and left points equally on each side of the center, being careful only to touch the left point to the piece. As the image starts to develop on the piece, I can see if an adjustment is needed to the right or left to make the diameter of the tenon (Figure 8).



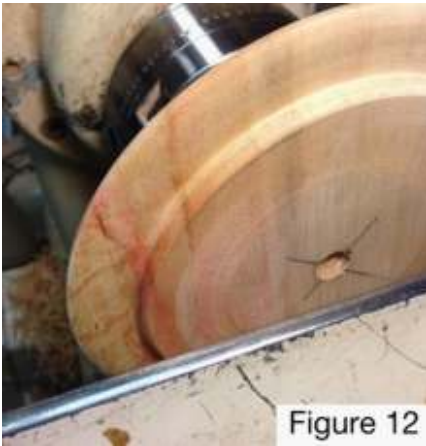
Turn the tenon and then rough shape the back of this piece. Leave the rim at about $\frac{1}{4}$ ". Then separate the two halves and set this piece aside (Figure 9).



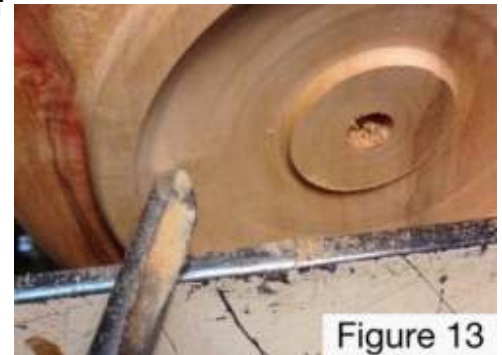
It is time to repeat steps 7, 8, & 9 on the half still on the lathe. This time leave $\frac{7}{16}$ " at the rim. This will allow enough wood to make the bead match up the two halves (Figure 10).

Once we have the rough shape for the back of the piece, it is time to reverse the piece and place it in the chuck jaws. The first step is to clean up the face to remove any unevenness and shape the edge in from the edge about $\frac{5}{8}$ ", down about $\frac{1}{8}$ " then curve it down another $\frac{1}{16}$ " to $\frac{1}{8}$ " (Figure 11).



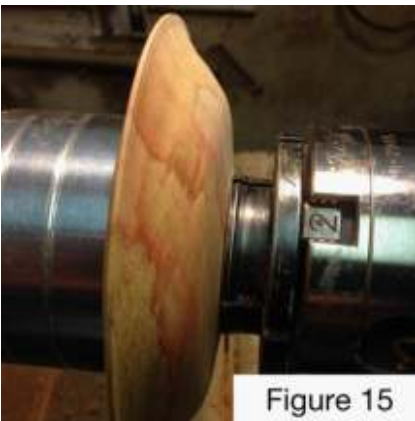


The amount of curve will give the appearance of the clam shell being closed or partially open. The bead that we are making during this step should be about 1/8" tall and slightly rounded to hold the other piece in place (Figure 12). I should point out that this is also different than doing boxes in the traditional way of doing the mortise or recess first.



When we are satisfied with the shape of the curve on the lip and the bead that holds the two pieces together, it is time to start shaping the inside of the bowl (Figure 13).

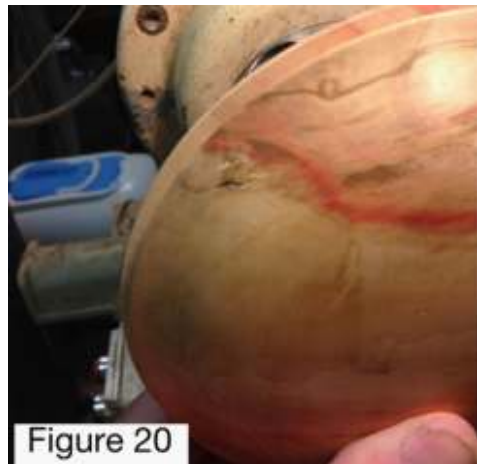
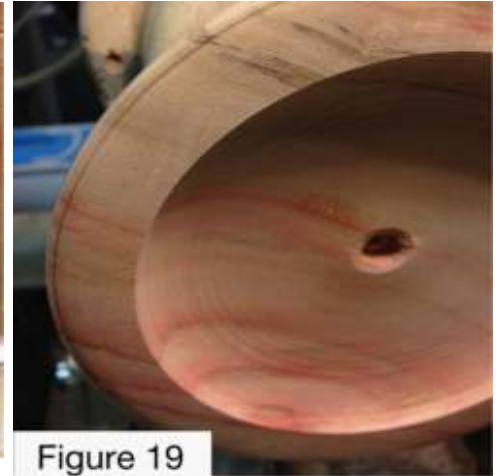
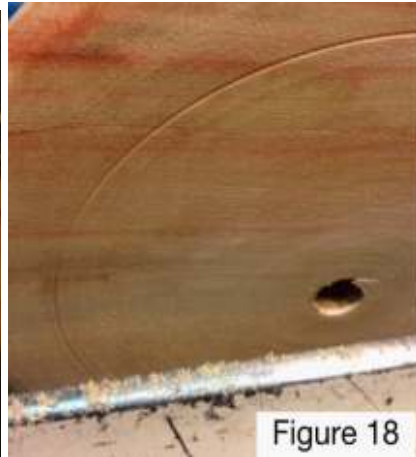
As you progress into the bowl, keep checking the thickness of the wall. What we are looking for is about 1/4" to 3/16" thickness (Figure 14). Once we have reached the desired thickness and removed any tool marks, it is time to sand to the desired grit. After sanding, apply sanding sealer/finish to the inside of the piece.



After the sealer/finish is dry, it is time to reverse the piece and finish turning the other side. The method that I use is to use an adapter to fit the chuck onto the live center and a vacuum chuck, I can center

the piece perfectly (Figure 15). Once I have pulled vacuum, I remove the chuck from the tail stock. I remove the point and use only the ring center to hold the piece in place for the first part of the final shaping. This is done for safety. When I am satisfied with the edge and curve. I remove the tailstock. The thickness at the edge should be about 1/16". With the tailstock removed, I use a shearing cut to remove the remaining tenon (Figure 16). By using a vacuum chuck, I can sand this entire side and apply a sanding sealer/finish.

When the sealer/finish is dry you can remove the piece and start on the second piece that we roughed out and set aside. Since we cut the tenon and rough shaped the outside of the piece during the first edge true up (Figure 9), we can mount the piece on the chuck and start on the inside. I start by using my dividers to measure the inside of the bead of the first piece (Figure 17). Then transfer that diameter to the second piece using the same method that I used when marking out the tenon (Figure 18). Once this is done, shape the outer edge with the downward slope as you did on the first side (Figure 19).



After the rim has the shape that you like, it is time to start sneaking up on the actual fit of the two pieces (Figure 20). Continue working on the fit until it is a snug, but not a tight fit as we like to see in a traditional box. After the fit is a nice one, continue to shape out the bowl, clean up any tool marks, sand to the grit of your liking, and apply a sanding sealer/finish. It is now time to reverse the piece and finish the outside (Refer to Figures 15 & 16).

When you finish going through the steps referred to in Figures 15 and 16, you should now have a finished clamshell box. I generally buff my pieces to the final luster that I like.



Suggested TOOLS

- Bowl gouge: 3/8" Preferred, or 1/2"
- Parting tool: 1/8" or 3/8" beading parting
- Round-nose scraper
- Square-edge scraper
- Dividers or compass
- Inside-outside calipers

Turner's Name	Apr 2015	May 2014	Jun 2015	Jul 2015	Aug 2015	Sep 2015	Oct 2015	Nov 2015	Dec 2015	Jan 2016	Total	Group Subtotal	BOM Member
Bowl Of Month Member													y
Sandy Jarrell	4	7	2	6	4	1	0	7	0	4	35		y
Glynn Cox	3	0	2	2	0	6	0	0	0	0	13		y
Ray Moyer	4	0	5	0	10	4	2	0	0	0	25		y
John Lauderbaugh	0	0	0	0	0	2	0	0	0	1	3		y
Ron Howe	0	0	7	0	5	3	4	2	0	0	21		y
Jimmy Fife	0	0	0	0	0	0	0	0	0	0	0		y
Bill Collins	0	0	0	0	0	0	0	0	0	1	1		y
Josh Boaz	0	0	0	0	0	0	0	0	0	0	0		y
Tommy Schutz	0	0	0	0	0	0	0	0	0	0	0		y
	0	0	0	0	0	0	0	0	0	0	0		y
	0	0	0	0	0	0	0	0	0	0	0		y
	0	0	0	0	0	0	0	0	0	0	0	98	y
Not Bowl Of Month Member													n
David Baulch	2	0	0	0	0	1	7	0	0	0	10		n
John Solberg	3	0	0	0	0	0	0	0	0	0	3		n
Roger Jones	1	0	0	0	0	0	0	0	0	0	1		n
Ronnie Nuzum	2	1	1	0	0	0	0	0	0	0	4		n
Don Christiansen	2	0	1	0	0	2	0	0	0	0	5		n
Anonymous	0	1	2	1	5	4	2	2	1	6	24		n
Bill Holt	0	0	0	2	4	3	1	0	0	1	11		n
Kerry Weeks	0	0	0	0	0	1	0	0	0	0	1		n
Brian Begina	0	0	0	0	0	2	0	0	0	0	2		n
Dick Koch	0	0	0	0	0	1	0	0	0	0	1		n
Larry Roberts	0	0	0	0	0	3	0	0	0	0	3		n
Ken Cardin	0	0	0	0	0	3	0	0	0	0	3		n
Tom Beatty	0	0	0	0	0	1	0	0	0	0	1		n
Don York	0	0	0	0	0	1	0	1	0	0	2		n
Ronald Neben	0	0	0	0	0	1	0	0	0	0	1		n
James Haynes	0	0	0	0	0	1	0	0	0	0	1		n
Steve Thomason	0	0	0	0	0	2	0	0	0	0	2		n
Jim Barkelew	0	0	0	0	0	1	0	2	0	1	4		n
Gary Futoma	0	0	0	0	0	1	0	0	0	0	1		n
Jeremy Tyson	0	0	0	0	0	1	0	0	0	0	1		n
Tom Echols	0	0	0	0	0	1	2	0	0	0	3		n
Pam Thompson	0	0	0	0	0	1	0	0	0	0	1		n
Jim McGregor	0	0	0	0	0	3	0	3	0	0	6		n
Ron Traylor	0	0	0	0	0	1	0	0	0	4	5		n
Larry Sweeney	0	0	0	0	0	1	0	0	0	0	1		n
David Carter	0	0	0	0	0	2	0	0	2	0	4		n
R. Placido	0	0	0	0	0	0	1	0	0	0	1		n
Rick Gauthier	0	0	0	0	0	0	1	0	1	0	2		n

Wayne Clowers	0	0	0	0	0	0	4	0	15	0	19		n
Bill Boehme	0	0	0	0	0	0	1	1	0	0	2		n
Jim Humphrey	0	0	0	0	0	0	2	0	0	0	2		n
Bob Wiggins	0	0	0	0	0	0	0	0	4	11	15		n
David Colley										3	3		
Steve Dymond										2	2		
David Walker										1	1		
Matt Bashore										1	1		
Paul Tiefel										8	8		
											0		
	0	0	0	0	0	0	0	0	0	0	0	164	n
Grand Total	21	9	20	11	28	58	30	18	23	44	262		

Advertisements

Anchorseal®

The club has purchased a 55-gallon drum of Anchorseal sealant for green wood and it is available to members for \$10.00 per gallon. It can be purchased at club meetings and at other times is being stored at Bob Clark's place, 1201 McClendon Road, in Weatherford, TX. Contact James Haynes for payment.

See the [WNT web site ads page](#) for the latest information on what other members have for sale.

Rules for advertisements: Free ads are available only to WNT members. The deadline for submission or cancellation of an ad is the 10th of the month to be placed in that month's newsletter. Ads will only run for one issue unless notified otherwise. If you wish to continue running an ad for more than one month, please advise the editor (email wntnewsletter@gmail.com) by the 10th of the month. Also, if you decide to cancel an ad, please notify the editor (have you spotted the trend yet?) by the 10th of the month.



Wood World offers a 10% discount to current Woodturners of North Texas members.

<http://www.woodworldtx.com/>



Rockler also offers a 10% discount to current Woodturners of North Texas members. Show your membership card in order to get the discount.

<http://www.rockler.com/>



Woodcraft offers a 10% discount to current Woodturners of North Texas members. Show your membership card in order to get the discount.

<http://www.woodcraft.com/>

The Regular Monthly Meetings are held on the last Thursday of each month at the Handley-Meadowbrook Lions Club, 6013 Craig Street, Fort Worth, TX.

Board meetings are held on the second Tuesday of each month at **Niki's Italian Bistro**, 5237 Davis Blvd. (FM1938) in North Richland Hills. Check the WNT web site for any updates. All WNT members are invited to attend. If you would like to join the group for dinner, it begins at 5:30 PM and the business meeting starts at 6:30 PM.

Board of Directors

President	Glynn Cox	Home 817-337-0210
Vice President	Bob Wiggins	Cell 917-690-7131
Past President	Dave Marshall	Cell 817-229-9676
Treasurer	James Haynes	Cell 214-502-9970
Librarian	Randy Johnson	Home 817-795-6018
Activities	John Horn	Home 817-485-7397
Newsletter	Ron Schiller	Home 214-518-6142
	Josh Boaz	Cell 972-281-7450
Secretary	Tom Beatty	Cell 817-919-6685
Audio-Visual	Bob Clark	Cell 817-304-3318
Member-at-Large	John Lauderbaugh	Cell 817-903-3947

The Woodturners of North Texas newsletter is published monthly. Inputs are due to the editor by the tenth of each month for inclusion in that month's newsletter.

WNT gives permission to all other AAW woodturning chapters, woodworking magazines, and newspapers to use any text material and accompanying photos or drawings contained herein for the benefit of woodturners everywhere. We ask that credit be given to the source of the material. WNT logos and graphics may not be copied without permission.

Copyright 2015, Woodturners of North Texas

WNT WEB SITE: <http://www.wntx.org/>